

## INSTRUCTIONS ON FASTENING YOUR 2018 FAN EXPO REGINA WRISTBAND

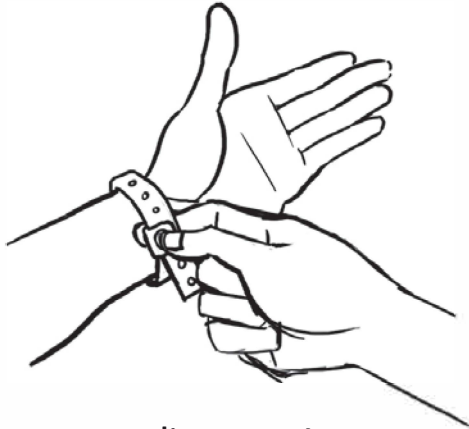


diagram A

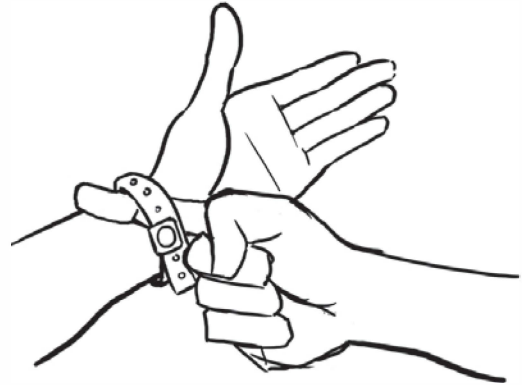


diagram B

### YOU MUST KEEP THIS WRISTBAND ON FOR ALL DAYS YOU HAVE PURCHASED ADMISSION

- Please be sure to lock your wristband so that it snaps when closed. You may choose to cut the excess length from the wristband if you would like. (See diagram A).
- Your wristband **MUST** be fastened securely around your wrist with **NO MORE** than 1 finger width space between your wrist and the wristband. (See diagram B).
- Please remember to arrive with your wristband on and fastened in order to enter as quickly as possible.
- Random checks will be made with Security to be sure that no wristbands have been tampered with or damaged.
- **IF YOUR WRISTBAND HAS BEEN TAMPERED WITH OR DAMAGED IN ANY WAY, IT WILL BE CONFISCATED FROM YOU AND YOU WILL NOT BE ALLOWED ACCESS INTO FAN EXPO REGINA.**
- These wristbands are non-transferable.

**VISIT OUR ONSITE CUSTOMER SERVICE DESK IF YOU HAVE ANY QUESTIONS.**